

# MODULARITY: BECAUSE CHOICE MATTERS

SCHICK 33	DEXIS PLATINUM
<p><b>SENSORS</b></p> <p>0 1 2</p> <p>Three sensor sizes provide a full range of solutions for children and adults.</p>	<p>1</p> <p>Only one sensor is available for use on all patients, regardless of age, size or anatomical anomalies.</p>
<p><b>CABLES + CONNECTORS</b></p> <p>3' 6' 9'</p> <p>Three different cable lengths and replaceable cable technology enable instant, in-office servicing. <b>Schick</b> USB Interface Module offers optimal power management, uninterrupted USB connectivity and active technology diagnostics.</p>	<p>9'</p> <p>DEXIS Platinum's cable is permanently connected to the sensor and is only available in one size. DEXIS does not provide an interface module.</p>
<p><b>POSITIONING SYSTEM</b></p> <p>ADHESIVE AUTOCLAVABLE</p> <p>Choose from two positioning systems based on the right fit for your practice's preferences and needs.</p>	<p>Autoclave is the only positioning system presently available from DEXIS.</p>



SCHICK 33 VS. DEXIS PLATINUM

# THE CHOICE IS CLEAR



**CEREC OmniCam:** Providing dental restorations in just one session

### INNOVATIVE CHOICES FOR A REWARDING PRACTICE LIFESTYLE

At Sirona, our broad range of compatible solutions is developed entirely around you. Every research study, every R & D investment and every new innovation is designed for one purpose: to help drive your success.



**GALILEOS:** The right 3D choice for every dentist providing diagnostic solutions



**Schick 33:** The most advanced imaging resolution in the industry



**ORTHOPHOS XG 3D:** Hybrid 2D/3D solution for all your imaging needs



**HELIODENT<sup>plus</sup>:** Intraoral x-rays made easy



**SIROLaser Advance:** High-quality powerful laser for treatment and tissue management

### SIRONA: THE DENTAL TECHNOLOGY LEADER

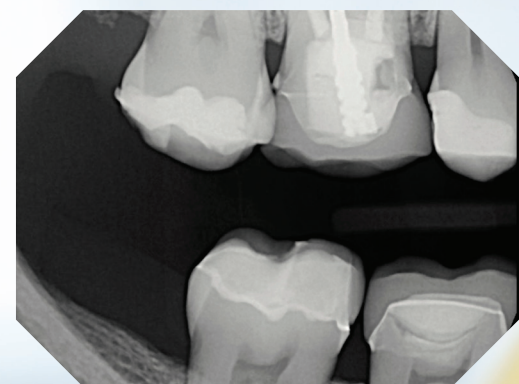
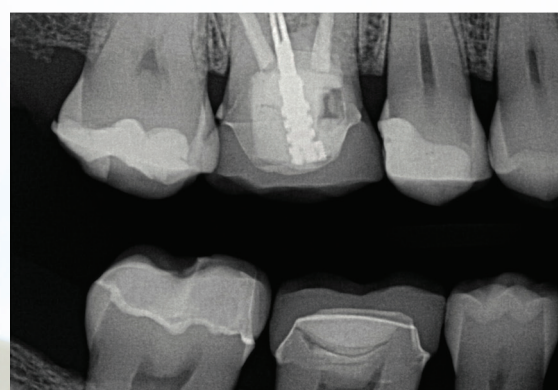
Sirona, the technology and innovation leader in dentistry, has served dentists worldwide for more than 130 years. Sirona develops, manufactures, and markets a complete line of dental products, including CAD/CAM restoration systems [CEREC], CBTC imaging systems [GALILEOS], extraoral imaging systems, digital intraoral imaging technology [SCHICK], dental treatment centers and hand instruments. Visit [www.sironausa.com](http://www.sironausa.com) for more information about Sirona and its products.



MADE IN THE USA SIRONA DENTAL, INCORPORATED 30-30 47TH AVENUE LONG ISLAND CITY, NEW YORK 11101 USA 1.877.724.4254



## DIAGNOSTICS THAT MAKE ALL THE DIFFERENCE



SCHICK 33		DEXIS PLATINUM	
33.3 LP/MM	RESOLUTION	25.6 LP/MM	
1.9 MEGAPIXELS SIZE 0		2.2 MEGAPIXELS	
2.7 MEGAPIXELS SIZE 1			
4.1 MEGAPIXELS SIZE 2			

SCHICK 33	DEXIS PLATINUM
<p>Our design provides a film-like capture area to maximize diagnostic capability with every image.</p> <p>Our sensor design achieves an active area most similar to standard size 2 film.</p>	<p>Cutting off all four corners creates a smaller active imaging area.</p>
<b>DIAGNOSTIC ACTIVE AREA</b>	

## SIMPLY UNPARALLELED SERVICE & SUPPORT

SCHICK 33	DEXIS PLATINUM
<p><b>2 YEARS</b> ⌚ ⌚</p> <p>Our comprehensive program covers everything, including handling errors, and a 100% satisfaction guarantee.</p>	<p><b>1 YEAR</b> ⌚</p> <p>DEXIS warranty coverage ends after the first year, and only covers defects in materials and workmanship.</p>
<p><b>1 SIMPLE FLAT FEE</b> = \$</p> <p>One warranty program with one flat fee and complete coverage for the entire practice on both manufacturer and user issues.</p>	<p><b>MULTIPLE SENSORS, MULTIPLE FEES</b> = \$\$\$</p> <p>Extended warranty is purchased on a per-sensor basis from three complicated options. These programs differentiate between user error and manufacturer defects.</p>
<p><b>FREE</b></p> <p>There is no additional charge for our complete software bundle. It's free!</p>	<p><b>\$\$\$</b></p> <p>DEXIS software requires significant extra charge on top of sensor purchase.</p>
<p><b>LOCAL PATTERSON SPECIALISTS</b></p> <p>Every Schick system is installed by technicians based at 78 local Patterson branches. Phone and web support is provided through the Patterson Technology Center (PTC), the dental industry's only dedicated technology support center.</p>	<p><b>TECHNICAL SERVICE + SUPPORT</b></p> <p><b>A SINGLE PROVIDER</b></p> <p>Support is provided via phone or web from a Georgia-based call center.</p>
<p><b>11 PRODUCT ADVANCEMENTS</b></p> <p>Schick's technology breakthroughs have become industry standard, including CMOS-APS imagers, USB connectivity and in-office replaceable cables.</p>	<p><b>2 SENSOR INTRODUCTIONS</b></p> <p>DEXIS originally released their CCD sensor in 1995. In 2009, they introduced their current CMOS version.</p>
<p><b>MADE BY SIRONA</b></p> <p>All Schick branded sensors are designed and manufactured at the Sirona Dental, Inc. facility in Long Island City, NY</p>	<p><b>MADE BY?</b></p>